



CE Marking

The shipped version of this device complies with the requirements of the directives 89/336/EWG, 73/23/EWG and 1999/5/EG





***Mini OEM Reader LF & Reader OEM LF
& OEM Reader Stick LF
Quick Start Guide***



Copyright © iDTRONIC GmbH 2009

Reproduction, adaption or translation without prior written permission is prohibited, except as allowed under copyright laws. The information contained in this document is subject to change without notice



Introduction:

This quick manual describes the physical behaviour, short datasheet and conformities of the OEM READER LF Series.

To install your OEM LF Reader please follow the steps as described below under point Installation.

*If you are developing applications using the EVO Desktop Reader, please refer to the „**OEM Reader Programmers Guide**“*

*For technical questions, please contact our support team:
support@idtronic.de*

Box contents:

- Mini OEM Reader LF or OEM Reader LF or OEM Stick Reader LF
- Quick Start Guide

The iDTRONIC reader software and documentation can be downloaded from our homepage:

<http://www.idtronic-rfid.com/download/sdk>

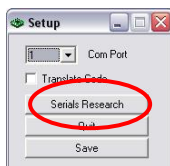
Product specification:

| | |
|--------------------------------|--|
| Interface: | USB or RS232 |
| Integrated antenna: | Yes |
| Operating system: | MS Window XP, Linux |
| Power Supply: | 5 Vdc/60 mA - Bus-self powered |
| Signals: | 1 LED red + 1 LED two coloured |
| Temperature of use: | -20 °C to +70 °C |
| Supported transponders: | EM 4102 EM 4550 NXP Hitag 1/2 NXP Hitag S |
| Reading range: | With ISO card EM4102: 7 cm |
| Options: | Firmware for Temic 125 kHz tags on request |

Installation & Quick Start Guide:

Please refer to installation guide to start the software and reader successfully.

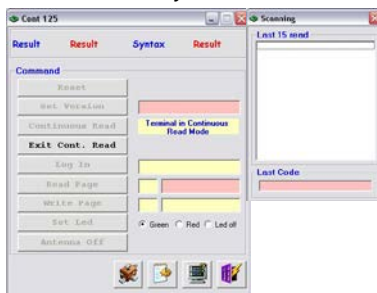
1. Download the software package
2. Unpack the zip file to folder of your choose.
3. Open the folder demo software and start the file "Setup.exe"
4. Please follow the instructions at the installation procedure.
5. After successfully installation of the software, please start the software under menu point Cont125 in programmes.
6. Select the right Comport (you can find it under System Properties/Device Manager) or proceed with menu point "Serial Research".



7. The option "Translate Code" can be set for receiving the UID numbers in different formats



8. After setting the Comport please proceed with the option "Save". Afterwards the main menu of the testing software will be started and the reader is immediately in the mode "continuous read"



9. Now you can proceed to read or write tags. For detailed information about the software, please refer to the manual "125kHz User Manual Demosoftware"